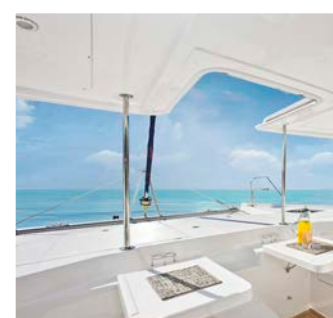


LE PARD48



PERFORMANCE



COMFORT



STYLE



INNOVATION



VERSATILITY



LEOPARD 48



INTRODUCING

Leopard Catamarans is excited and proud to introduce the Leopard 48. Focused on blue water performance and comfortable living, the Leopard 48 is a welcome addition to the award winning Leopard line. From the design table and factory floor of the catamarans industries leading manufacturer, the Leopard 48 comes with the pedigree sailors have come to expect from Leopard catamarans.

Her modern lines, open floor plan and casual elegance set a new standard for the modern cruising catamarans. Drawing on the success of the Leopard 44, the Leopard 48 features a large forward cockpit with direct access from the saloon and foredeck. The raised helm station with easy access to the cockpit and side deck allows for shorthanded sailing while not separating you from your family and friends.



Classic cherry wood finishes and articulated solid wood trim define the interior of the Leopard 48, providing both warmth and practicality. The galley is conveniently located between the outdoor and indoor living spaces with easy access to the helm, aft cockpit, saloon and forward cockpit.



From your chosen lay-out to the interior and exterior colors, you can customize your Leopard 48. The option list offers a wide variety of cruising gear and amenities to suit your family's cruising and live aboard needs.

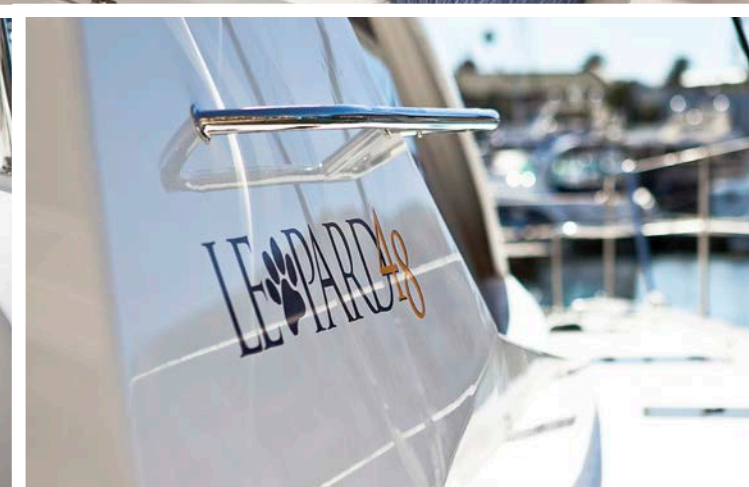
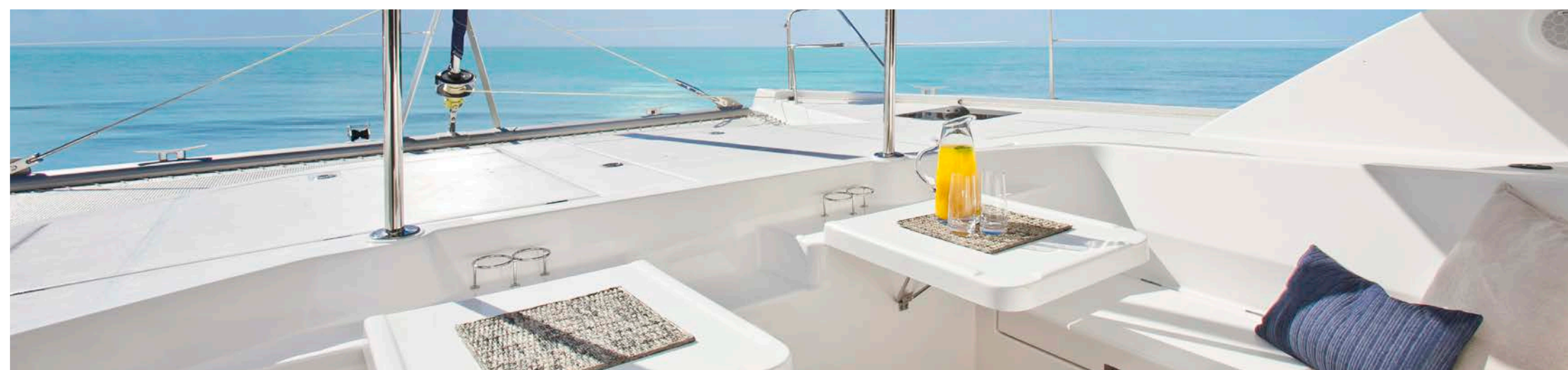


EXTERIOR

CRAFTSMANSHIP

The classic Leopard lines are easily recognized in the Leopard 48's sleek profile. From the 360 degrees visibility from the helm to the well protected fore and aft cockpit, the Leopard 48 is designed for a modern blue water life style. Stepping onboard the wide transoms, you are only 2 steps away from direct access to the cockpit and side decks. From the first Leopard catamaran that was launched, easy access in and out of the water has been an important feature; the Leopard 48 continues this philosophy.

The Leopard 48 creates versatile living space in the aft cockpit and aft deck, the adjustable seat back transforms from usable cockpit table seating to aft deck lounging space, with its pivoting bolstered backrest. The raised helm-station offers exceptional visibility and is easily accessed from the cockpit and side deck. The helm seat is well protected from the elements by the hardtop. The standard electric winch and all lines led aft make short-handed yacht control very manageable. From the helm-seat, all sail handling and engine controls are within arm's length. The Leopard 48 also offers comfortable seating for up to 3 people at the helm.



Just like the Leopard 58 and the award winning Leopard 44, the Leopard 48 features the innovative forward cockpit with direct access to the saloon and fore deck. Aft cockpit, saloon / galley and forward cockpit are all on the same level, making it very easy to move around the yacht while at anchor or at sea. The continuous hard top provides a stable platform for access to the mast and boom, and can accommodate a large array of solar panels.

The clear and uncluttered deck layout of the Leopard 48 is emphasized by the recessed deck hatches. The sleek Leopard lines are easily recognized by the large teardrop shaped saloon and hull side windows, giving this yacht a very modern look and a source of organic light in the saloon and cabins.



LUXURY

An abundance of natural light and ventilation define the interior of the Leopard 48. The open saloon and galley layout allow for a modern indoor – outdoor lifestyle. The classic yet elegant interior finishes are designed for comfortable living and ease of maintenance.

The forward facing navigation station can accommodate a full array of electronics and engine controls, while offering additional storage space under the seat. The spacious interior dining area can seat up to 8 guests comfortably and the dining table can be converted to an optional double berth or coffee table.

SALOON AND GALLEY



The open galley with Corian countertops and standard stainless steel appliances blends effortlessly into the salon, forward cockpit and aft-cockpit. The galley has deep side by side double sinks, Vitrefrigo two drawer front opening fridge and freezer and a Force 10 gas range with three burner stove top and oven / broiler.

Extensive countertop space includes a raised bar and separate prep station above the fridge / freezer, making the galley the social hub of the yacht. There is plenty of over and under cabinet space for a weekend sail or a trip around the world. The headroom is a comfortable 6'5 everywhere in the saloon. The soft LED overhead lighting, cherry wood finishes with real wood trim and flood lighting creates the perfect ambiance.

ACCOMMODATIONS



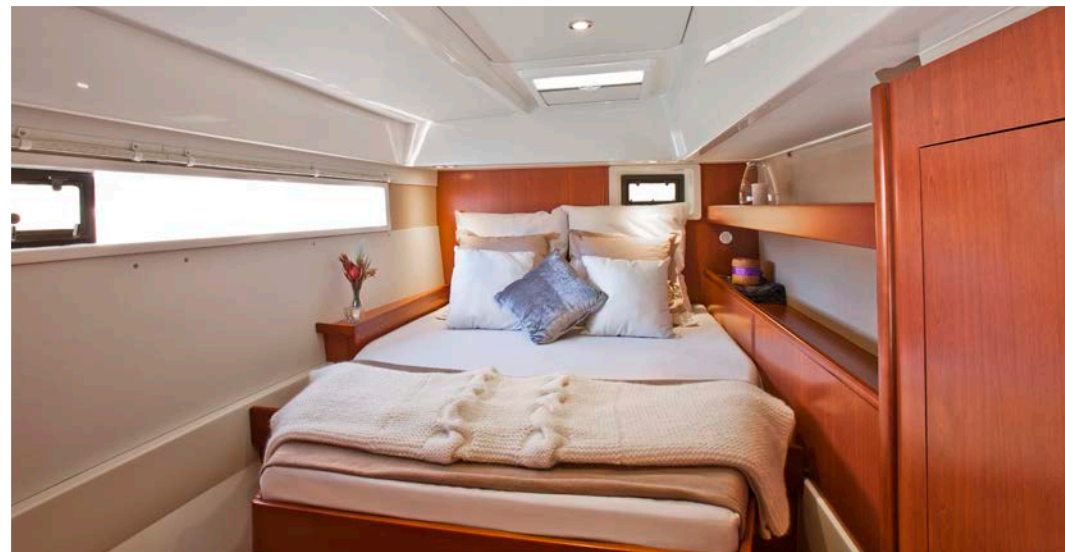
COMFORT

With the option of a 3 or 4 cabin layout, the large cabins in the Leopard 48 set a new standard in comfort. Each interior design offers both comfort and practicality. Austrian Walnut laminate flooring and cherry finishes with solid wood articulated trim give a luxurious feeling inside the hulls, and all heads are ensuite with separate stall showers.

The starboard hull is entirely dedicated to the owner's suite in the 3 cabin layout. The walk around center line queen sized bed allows for easy side access. With a comfortable couch, or optional storage unit, there is plenty of storage space in the passage way. The large master head features a stall shower with bench and a dedicated locker for a washer / dryer.



The guest cabins are well ventilated, offer excellent lighting, and storage space. Both guest cabins or all 4 cabins in the 4 cabin layout, feature ensuite heads with stall showers, toilet and wash basin.



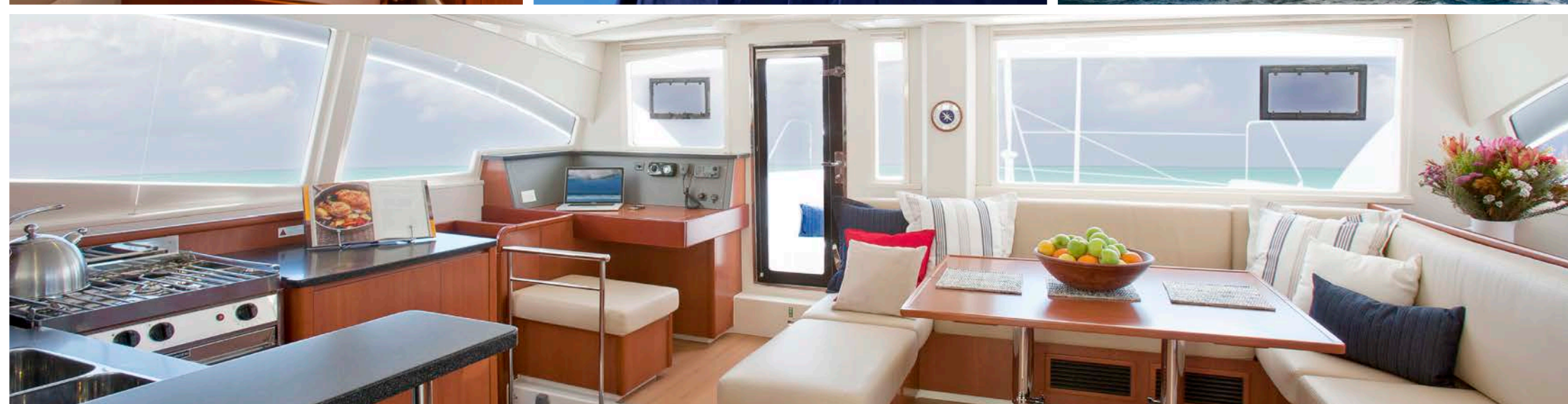
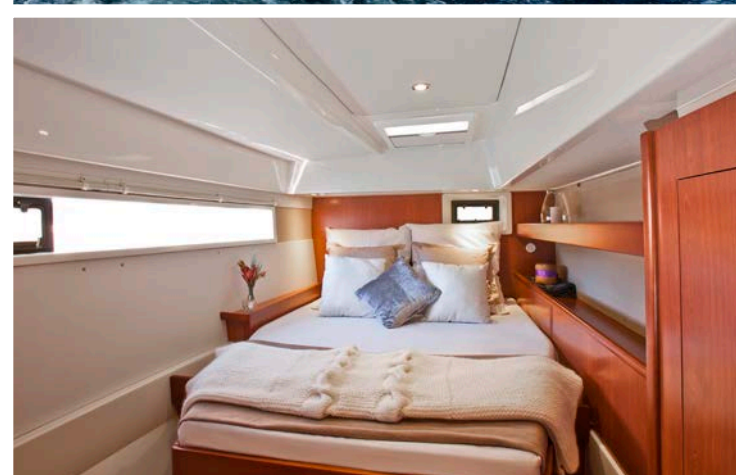
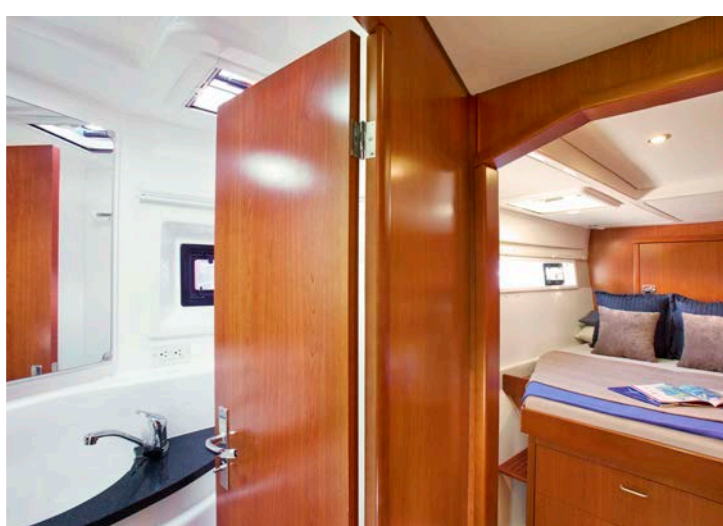
INNOVATION



THE LEOPARD LEAP

With many unique features, the Leopard 48 sets a new standard in the world of cruising catamarans. Overall, the Leopard 48 holds nothing back in its pursuit to excel in all areas. Its sleek style, comfort, space, blue water sailing capabilities and unique innovative features, combine to create a catamaran that fits right into the Leopard family.

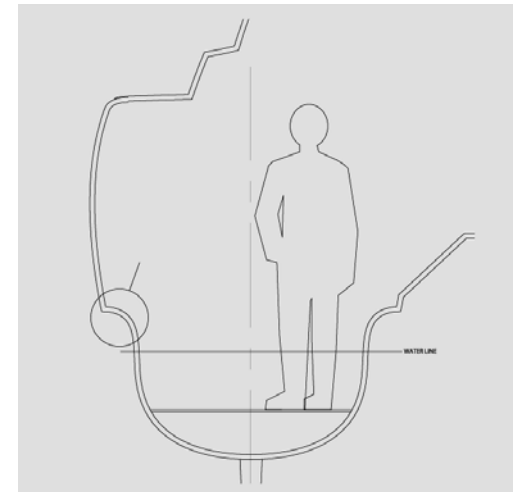
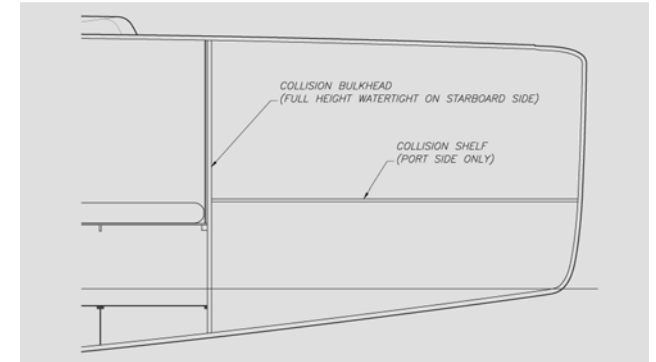


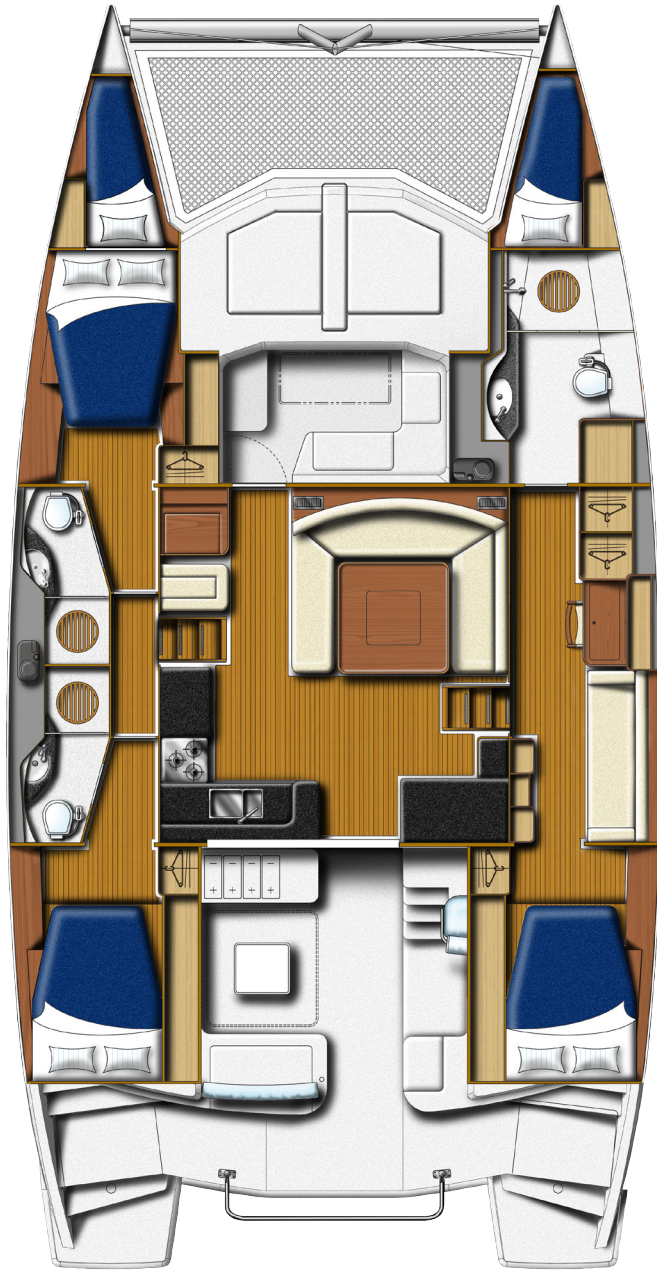


SPECIFICATIONS

LEOPARD 48 STANDARD SPECIFICATIONS

Length overall	48 ft 5 in.	14.75 m
Hull length	45 ft 5 in.	13.85 m
Beam	25 ft	7.64 m
Draft	4 ft 7 in.	1.40 m
Displacement	31,956 lb	14,460 kg
Fuel capacity	185 US gal.	700 L
Water capacity	264 US gal.	1000 L
Engines	2 x 39 hp	







LE PARD CATAMARANS

www.leopardcatamarans.com

The builder reserves the right to change or amend the contents of the document at any time without prior notification to any third party, and no liability will be accepted for errors contained within the same. Brochure and photography may include optional equipment.